

PanOptic™ Ophthalmoscope

Developed and patented by Welch Allyn—creator of the world’s first hand-held, direct-illuminating ophthalmoscope—the PanOptic Ophthalmoscope is a breakthrough concept in veterinary ophthalmology. Thanks to an innovative, proprietary optical design known as Axial PointSource™ Optics, this ophthalmoscope allows all veterinarians to easily examine the fundus.

- **Fast, easy entry into small, undilated pupils**
- **5X larger view of the fundus vs. standard ophthalmoscopes in an undilated eye**
- **25° field of view versus the 5° fields of view of standard ophthalmoscopes**
- **Greater working distance improves comfort for practitioner**
- **Complete compatibility with existing Welch Allyn 3.5 V power sources**

- #11800-V** Standard model
- #11820** Halogen HPX Ophthalmoscope with slit aperture, red-free filter, cobalt-blue filter on corneal viewing lens
- #11842** PanOptic iExaminer® Digital Imaging Kit: PanOptic Ophthalmoscope with cobalt-blue filter and corneal viewing lens (#11820), rechargeable 120-minute power handle(s), soft storage case, iExaminer adapter (#11840); lithium ion (#71960) battery; IEC plug type-B
- #11820-L** SureColor™ LED Ophthalmoscope with slit aperture, red-free filter, cobalt-blue filter on corneal viewing lens

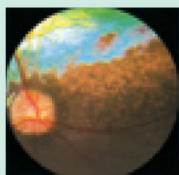
ACCESSORIES

- #11870** Patient eyecups (package of 5 reusable eyecups)
- #03800-U** Halogen HPX™ replacement lamp
- #03800-LED** LED replacement lamp
- #11875** Corneal viewing lens
- #05868-M** Diagnostic set carrying case for MacroView™ and PanOptic (hard)



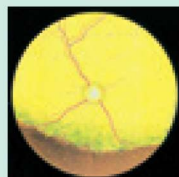
#11800-V
(Handle not included)

D|T|Y Optical
flexible solutions you can trust
www.dty.co.il - 03-9341133 - 052-3270220 - דטי שרותי אופטיקה



The Normal Fundus of the Dog

The dog’s fundus is characterized by the visual presence of three major venules with the direction being superiorly, inferonasally and inferotemporally. There are approximately 20 arterioles emanating from the disc in a radial pattern.



The Normal Fundus of the Cat

In the normal fundus of the cat, the optic disc is small and a peripapillary pigment ring is frequently present. There are three major arterioles leaving the disc: one superiorly, one inferonasally and one more inferotemporally.



Advanced Progressive Retinal Atrophy

PRA can be subdivided into generalized PRA and central PRA. The clinical signs of generalized PRA are night blindness, loss of peripheral vision, poor pupillary response and increased tapetal reflectivity. Central PRA is characterized by loss of central vision that progresses into total visual loss.

Patient Eyecup: The eyecup establishes and maintains proper viewing distance, provides image stability, serves as a pivoting point for panning around the retina, helps with orientation and screens out ambient light. The eyecup is cleanable and reusable.

Patented Axial PointSource™ Optics:

This proprietary technology makes it easy to enter undilated pupils and provides a 25° field of view, resulting in a view of the fundus that's 5X larger than you see with a standard ophthalmoscope in an undilated eye.



Patented Glare Extinguishment System:

Prevents interference from unwanted glare and reflections

PanOptic™ Soft Grip:

Ergonomically designed for maximum comfort, balance and access to controls

Dynamic Focusing Wheel:

Adjusts the focus in a continuous, smooth action for more precise control and optimum view. Available focusing range is -20 to +20 diopters.

FIELD OF VIEW—CANINE FUNDUS

Standard Ophthalmoscope PanOptic Ophthalmoscope

5X Larger View of the Fundus



Micro spot aperture: Allows quick visual entry in very small, undilated pupils



Cobalt filter: Blue filter used with fluorescein dye permits easy viewing of small lesions, abrasions and foreign objects (for use with #11820 only)



Small aperture: Provides easier view of fundus through undilated pupil



Slit: Used to determine various levels of lesions and tumors



Large aperture: Standard aperture for dilated pupil and general examination of the eye



Red-free filter: Excludes red rays from examination field for easy identification of veins, arteries and nerve fibers



Half-moon aperture (PanOptic model 11810 only): Provides a combination of depth perception and field of view



Welch Allyn iExaminer®
Capture. Store. Send. Retrieve.

- Rapid capture of fundus images on your Apple iPhone® for cost-effective documentation
- Send images to peers across the continuum of care at a moment's notice
- Easily portable, allowing you to capture images in any clinical environment
- Lower cost than traditional eye-imaging equipment
- Facilitates client education and compliance

- #11840
- #11840-A6
- #11840-A6P
- #11842

- iExaminer 4 and 4s
- iExaminer 6 and 6s
- iExaminer 6 Plus and 6s Plus
- PanOptic iExaminer Kit for 4 and 4s

- #11842-A6

PanOptic iExaminer Kit for 6 and 6s

- #11842-A6P

PanOptic iExaminer Kit for 6 Plus and 6s Plus



#11842
PanOptic iExaminer Digital Imaging Kit